

STONEY BROOK

VILLAGE



ASSISTED LIVING
WEST UNION, IOWA

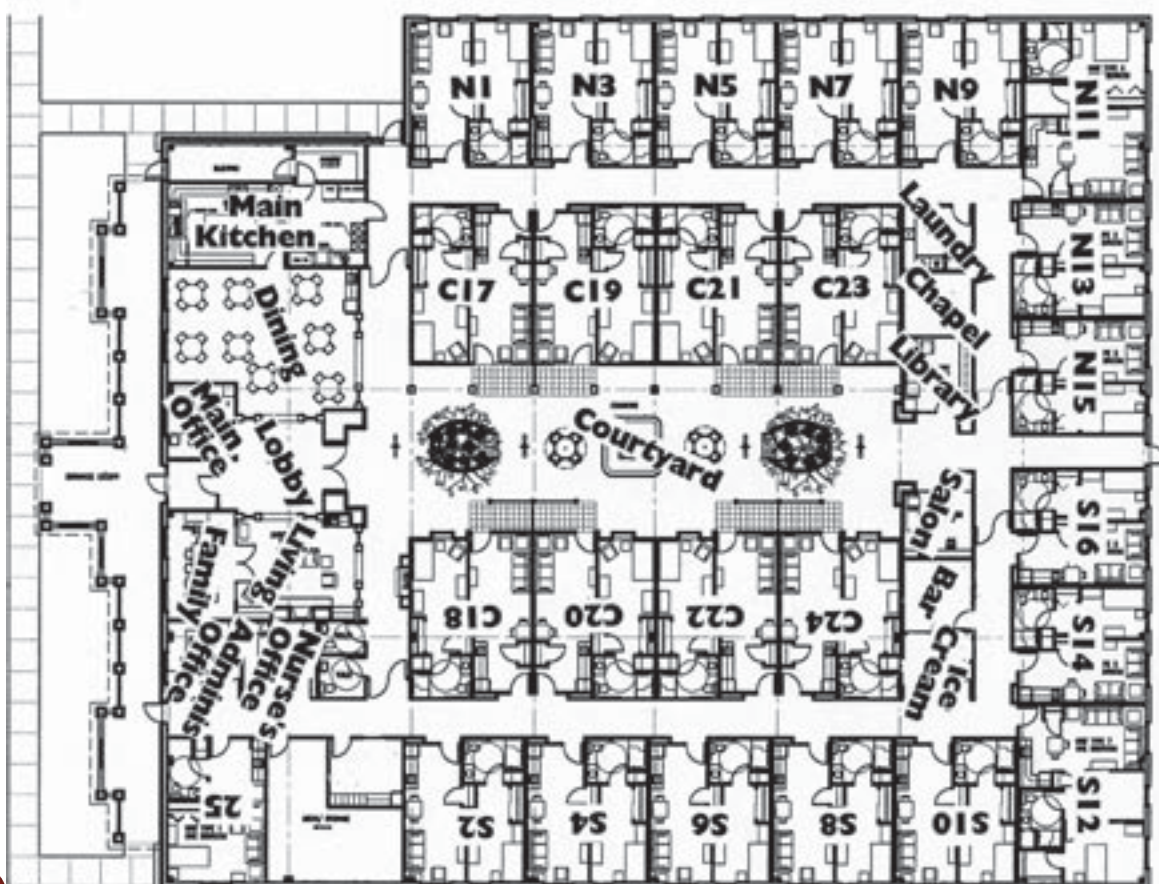
Welcome to

STONE BROOK VILLAGE

Assisted Living in West Union, Iowa



FLOOR PLAN OF STONEY BROOK VILLAGE





What is an Assisted Living Facility?

The Assisted Living Federation of America defines assisted living as a special combination of housing, personalized supportive services, and health care designed to cater to the individual needs of those who need help with activities of daily living, but do not need the skilled services provided in a nursing home. Activities of daily living might include, but are not limited to, bathing, grooming, hygiene, mobility, personal reminders, and medication management. Assisted living care promotes as much independence as possible although staff is available to provide services when needed. Staff is also provided for daily activities and scheduled transportation. Stoney Brook Village is a licensed Assisted Living Facility. Our concept centers around individualized apartment living for those who choose not to or are no longer able to live on their own. Typical residents may range from those who require minimal assistance to those requiring more personalized care. Upon deciding that Stoney Brook is a possible lifestyle choice, our Palmer Lutheran Healthcare nurse, along with several of our staff members, will conduct an assessment to determine if assisted living is a feasible choice for the resident. If it is confirmed that the person will thrive in our environment, an individual service plan will be written for the incoming resident. Assessments and service plans are typically written about two weeks prior to a resident moving in.

Stoney Brook offers the “Independence of our residents with the security of having friendly faces all around”

- 25 spacious apartments with kitchen cabinets and refrigerator
- State of Iowa Certified Assisted Living
- Unique and spacious common areas for residents and guests to enjoy
- 3 nutritious meals daily
- Medication Reminders
- Weekly Vitals
- Required Initial Nursing assessments as well as periodic reassessments
- Scheduled Transportation
- On Site Barber/Beautician
- Weekly housekeeping and laundry
- Activity and wellness programs
- The assurance of quality health care contracted through Palmer Lutheran Healthcare
- Minutes away from Palmer Lutheran Hospital, Gundersen Clinic, Cedar Valley Dialysis, as well as optometry and dental offices
- Professionally trained staff with 24 hour response and security
- Basic cable TV, wireless internet, and utilities are included (except for phone)
- Individually controlled heating/cooling
- Handicap showers
- Our 50% of common space includes a beautiful courtyard, living room with flat screen TV, private family room, chapel, ice cream parlor, bar, spa, library, and hair salon.

*Common areas at
Stoney Brook include...*



... Living Room ...



*... Kitchen &
Dining Room ...*



... Chapel ...



... Hair Salon ...



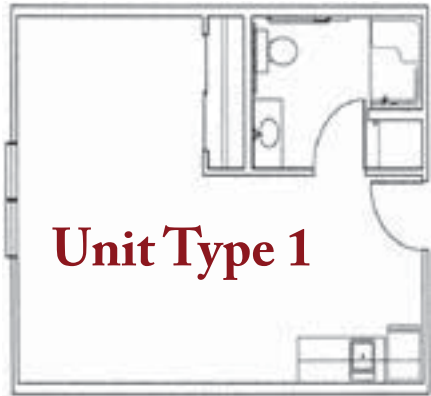
*... Family
Room ...*



... Bar ...

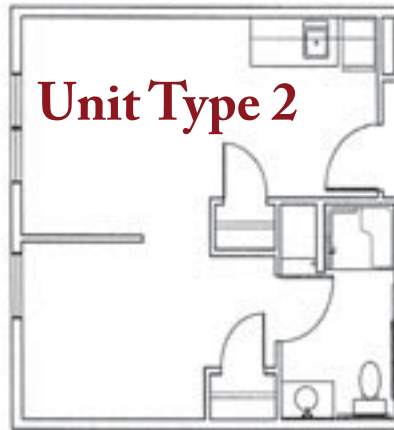


... Patio ...



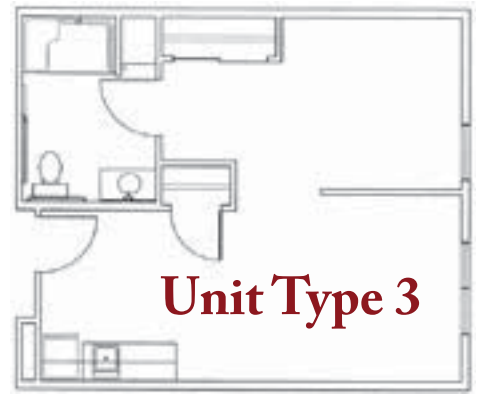
Unit Type 1

Living/Bedroom
Kitchen/Dining
Bath
Closet
396 sq. ft.
Apt. # 25



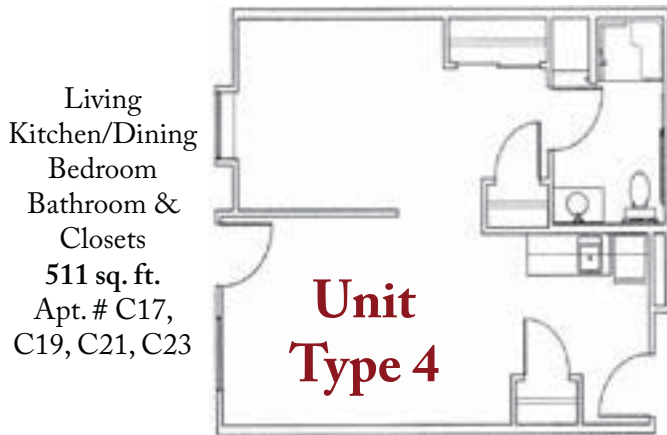
Unit Type 2

Living
Kitchen/Dining
Bedroom
Bathroom & Closet
409 sq. ft.
Apt. # S14, S16, N13, N15



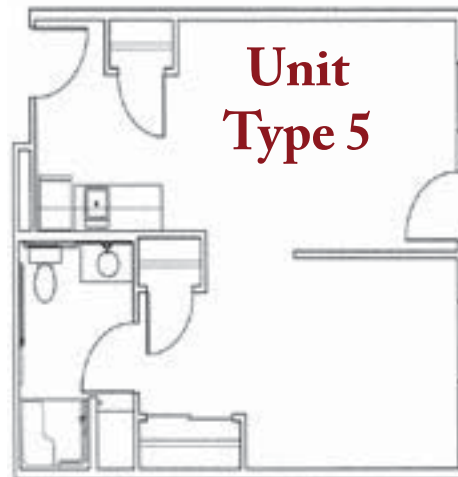
Unit Type 3

Living
Kitchen/Dining
Bedroom
Bathroom & Closet
471 sq. ft.
Apt. # N1, N3, N5, N7, N9,
S2, S4, S6, S8, S10



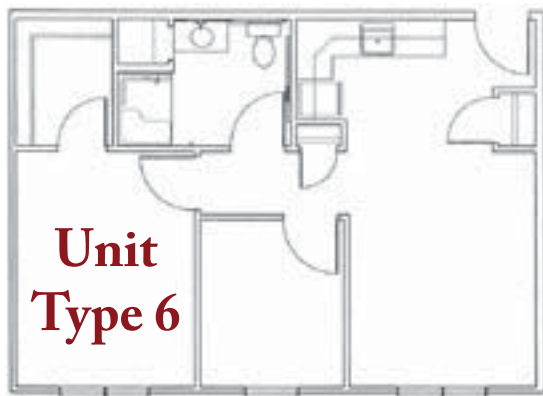
Living
Kitchen/Dining
Bedroom
Bathroom &
Closets
511 sq. ft.
Apt. # C17,
C19, C21, C23

Unit Type 4



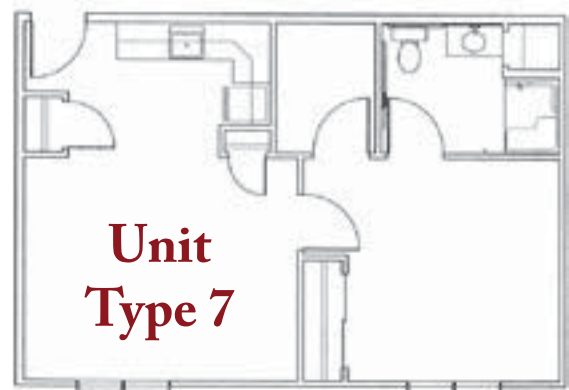
Unit Type 5

Living
Kitchen/Dining
Bedroom
Bathroom &
Closets
525 sq. ft.
Apt. # C18,
C20, C22, C24



Unit Type 6

Living
Kitchen/Dining
2 Bedrooms
Bathroom & Walk in Closet
618 sq. ft.
Apt. # N11

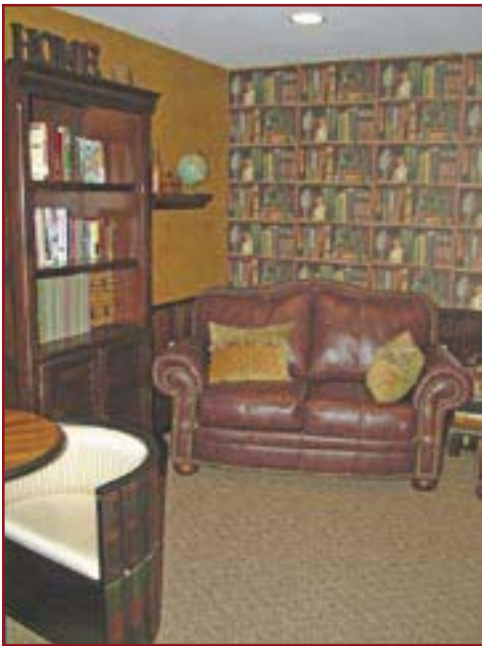


Unit Type 7

Living
Kitchen/Dining
2 Bedrooms
Bathroom & Closets
621 sq. ft.
Apt. # S12

Stoney Brook Activities

The following is a partial list of some of the planned activities that will be organized by our Activities/Transportation Director:



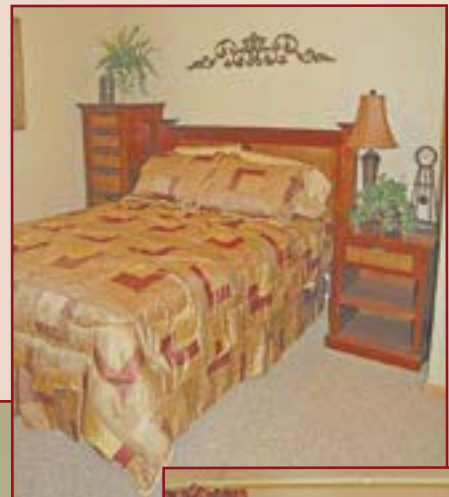
Library

- Shopping Trips
- Arts & Crafts
- Exercise Classes
- Board games
- Card games
- Bingo
- Book Club
- Scrapbooking
- Movie Night
- Gardening
- Meet the visiting pet
- Trips to attend school functions
- “Hearts Desire” program
- Spa Days with multiple available services
- Afternoon baking sessions in the main kitchen
- Happy hour events in the bar/ice cream parlor



Ice Cream Parlor

Inside a room at Stoney Brook...



Assisted Living Admission Criteria

Before moving into Stoney Brook, an assessment is conducted for each prospective resident to determine their needs and consider their requests. This assessment will determine if the criteria established by our licenser is met. Admission criteria includes the following:

- Ability to feed oneself independently with minimal assistance (temporary illness excluded).
- Independently mobile or requires no more than one staff member to assist with transferring or ambulating.
- Is not experiencing violent and abusive behavior that would be a danger to self and others.
- May be incontinent (urine or stool) but easily managed by incontinence products and or scheduled toilet trips.
- Must remain socially appropriate (ex. willingness to remain clothed in common areas, no inappropriate elimination of urine or bowel in common areas).
- Has a local physician willing to provide ongoing medical supervision and will provide a current diagnosis, medication orders, and orders concerning diet and other special needs.
- Can not be chemically dependent and abuse alcohol or other chemicals.
- Requires only intermittent or part-time health related care.

Assisted Living Transfer Criteria

An open relationship between the health care staff, administration, resident, and resident's family will insure that all parties will realize when we can no longer provide the services needed by the resident and when they meet our transfer criteria. We have formed an excellent partnership with the local nursing homes to make transfer of our residents a smooth transaction. We will not rest easy until they are comfortably placed in a facility that will accommodate their need for an increased amount of care.

- Unable to eat independently
- Bed bound
- Licensed nursing care needed for unstable medical condition
- Daily medication injections with the exception of a person with stable diabetes who receives subcutaneous injections from a licensed nurse
- Daily assessment or treatment by a licensed nurse for open wounds or pressure ulcer
- Requires routine assistance of two staff members for mobility, including transfers and ambulating
- Frequent falls
- Dangerous to self or others
- Demonstrates repeated violent or abusive behavior
- Has unmanageable incontinence
- Has repeated occurrences of inappropriate social behavior
- Absence of local physician to provide current diagnosis, medication orders, and orders concerning diet and other special needs
- Habitually wanders into danger
- Sexually or physically aggressive or abusive
- Has diagnosis or an active-stage contagious disease
- Is in an acute stage of alcoholism, drug addiction, or mental illness
- Requires more than intermittent or part time health related care
- Refusal to maintain a safe environment and/or refuses services that may have potential negative impact on self, other tenants, and or staff
- Is seriously confused and disoriented to person, place, and time

Stoney Brook has partnered with Palmer Home Health

to provide the highest quality health care available.

A Palmer Home Health Registered Nurse completes all the resident's assessments as well as weekly vitals and medication management.

Palmer also provides staffing of aides for any additional health care needs. Partnering with Palmer for health care has enabled the Stoney Brook staff to concentrate on creating a family environment for our residents as well as top notch dining services, and a personalized creative activity program.



705 S. Pine Street, West Union, Iowa

www.stoneybrookvillage.net

563-422-5690 or 563-422-7145